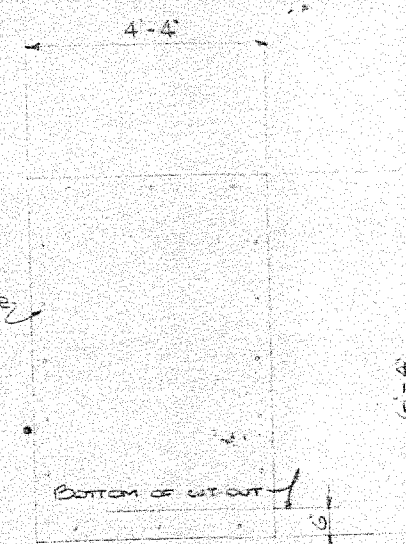
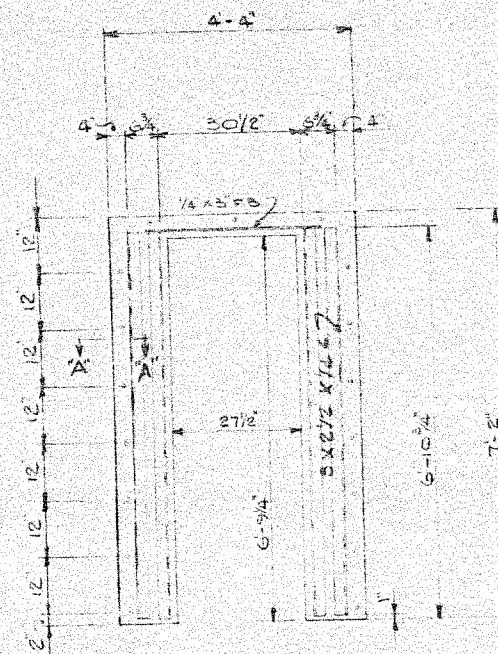


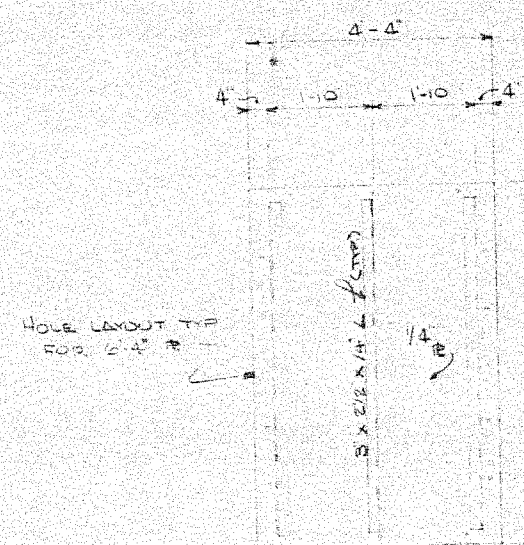
TONNAGE # (1/4)
(1) REQ'D.
MN DR.



TONNAGE # (1/4)
(1) REQ'D.
POSSIBLE OK.



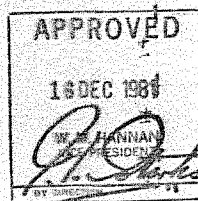
TONNAGE # (1/4)
(1) REQ'D.



TONNAGE # (1/4)
(1) REQ'D.

NEW YORK

THIS DRAWING APPROVED INsofar AS CLASSIFICATION REQUIREMENTS ARE CONCERNED



FILE COPY	
<input checked="" type="checkbox"/>	RECEIVED
<input type="checkbox"/>	FILE (NEW YORK)
<input type="checkbox"/>	FILE (NEW ORLEANS)
<input type="checkbox"/>	ABS NEW ORLEANS
<input type="checkbox"/>	USCG
<input type="checkbox"/>	INITIALS

TONNAGE # (1/4)
(2) REQ'D.

TOLERANCE ON FRACTIONAL DIMENSIONS - UNLESS OTHERWISE SPECIFIED										DO NOT SCALE		USED ON		BY			
REP	CHANGED FROM	E.A. NO.	DATE	BY	CHANGED FROM	E.A. NO.	DATE	BY	SCALE	SUPPRESSED	SCALE	SUPPRESSED	FILED BY	FILED BY	APPROVED	APPROVED	
										NAME TONNAGE FEATS		HULL # 90		MISSISSIPPI MARINE TOWBOAT CORPORATION		P.O. Box 2053, Chalmette, La. 70002	
										1420 35000 VESSEL		HULL # 90		MISSISSIPPI MARINE TOWBOAT CORPORATION		P.O. Box 2053, Chalmette, La. 70002	
										HULL # 90		MISSISSIPPI MARINE TOWBOAT CORPORATION		P.O. Box 2053, Chalmette, La. 70002		MM 70-11	